



MOUNTAIN VIEW COMMUNITY PRICE LIST

PLAN	BED	BATH	DEN	GARAGE	SF	PRICE
The Bobcat	3	2	N	1 BAY	1,316	\$415,000
The Grizzly	3	2	N	1 BAY	1,316	\$415,000

To learn more about these homes, please contact
sales@terryhomes.net or (406) 890-5501

INVENTORY HOMES

PLAN	BED	BATH	DEN	GARAGE	SF	PRICE
The Bobcat 116 Peaks View Loop, Kalispell, MT 59901 Lot: 24B	3	2	N	1 BAY	1,316	\$453,000
The Grizzly 108 Peaks View Loop, Kalispell, MT 59901 Lot: 23B	3	2	N	1 BAY	1,316	\$449,900
The Grizzly 120 Peaks View Loop, Kalispell, MT 59901 Lot: 24A	3	2	N	1 BAY	1,316	\$440,500
The Grizzly 112 Peaks View Loop, Kalispell, MT 59901 Lot: 23A	3	2	N	1 BAY	1,316	\$438,000

To learn more about these homes, please contact
sales@terryhomes.net or (406) 890-5501



MOUNTAIN VIEW COMMUNITY PROFILE

COMMUNITY OVERVIEW

Mountain View is a thoughtfully planned community that blends modern living with the beauty of the surrounding natural landscape. The community will consist of 407 homes upon completion, offering a diverse range of living options to fit various lifestyles. Residents can choose from single-family homes, townhomes, and cottages, designed with a mix of Mountain Modern and traditional styles to create a unique living experience.

In Phase 1A, the community will feature:

- 4 Single-Family Homes
- 2 Quadplex Townhomes
- 9 Duplex Townhomes

The homes will be built with quality craftsmanship and attention to detail, nestled within the natural surroundings of 41.42 acres of open space, 5.16 acres of park space, and 10.65 acres of undeveloped land bordering Ashley Creek. With walking paths throughout the community and easy access to the Parkline Trails, residents will enjoy an outdoor lifestyle like no other, right at their doorstep.

In addition to its fantastic amenities, Mountain View offers breathtaking views of the surrounding mountains to the north and south, creating a serene backdrop for daily living.

Mountain View offers the convenience of being just 6 minutes from Kalispell Mall, 7 minutes from Hutton Ranch Plaza, and 8 minutes from Logan Health Medical Center, ensuring that residents are never far from shopping, dining, or healthcare.

This community is designed to foster connection and convenience, with close access to major roadways and local amenities while still providing a peaceful retreat. Whether you are looking for a family home, a low-maintenance townhome, or a charming cottage, Mountain View offers something for everyone.

Total Number of Homes:

Mountain View, in its entirety, will consist of 407 dwellings. This thoughtfully planned community offers a mix of Mountain Modern and traditional-style homes, providing diverse living options to suit various lifestyles. The community will include:

- \2022 225 Single Family Homes
- \2022 92 Quadplex/Triplex townhomes
- \2022 74 Duplex townhomes
- \2022 16 Cottages

Pet Policy:

There shall be no livestock allowed upon the property. No more than two dogs or two cats or one cat and one dog may be kept on each lot.

Size of Typical Lots:

Within phase 1A of Mountain View, the community will include:

- \2022 4 Single Family Homes (.157 Acre | 6,839 SF)
- \2022 2 Quadplex Townhomes (.093-.113 Acre | 4,051 SF - 4,922 SF)
- \2022 9 Duplex Townhomes (.092 Acre | 4007 SF)

Community Dues/Fees:

Mountain View will have a Homeowners Association (HOA) responsible for maintaining key aspects of the community, helping to preserve its overall appeal and functionality. Dues will vary based on the homesite location and the level of services provided.

Certain homesites will have front lawn maintenance included as part of their HOA dues, while others may have different maintenance responsibilities. As the community develops, additional details regarding HOA fees and services will be finalized.



MOUNTAIN VIEW COMMUNITY PROFILE

\2022 Homes with HOA-maintained front lawns will have
HOA dues of \$120 Per quarter (\$480 per year)

Amenities:

Mountain View is designed to offer a harmonious blend of modern living and natural beauty, with a focus on outdoor spaces and connectivity.

The entire community will feature 5.16 acres of park space, 41.42 acres of open space, and 10.65 acres of undeveloped land bordering Ashley Creek, creating ample room for residents to enjoy nature and outdoor activities.

Paths will be dispersed throughout the community, providing easy access to the Parkline Trails, where residents can walk, jog, or bike throughout the Flathead Valley. These trails connect the community to the broader outdoor network, offering an inviting space for recreation and exploration.



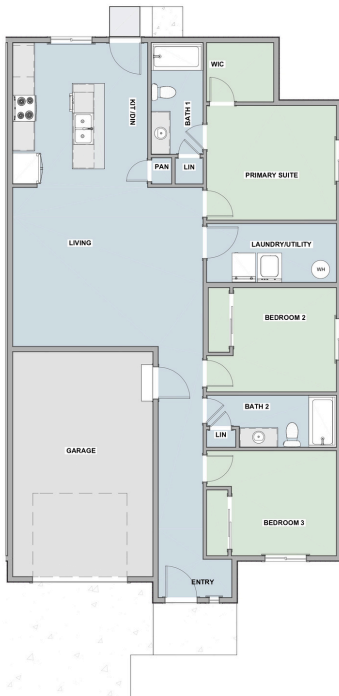
Beth Tullis, Loan Officer
 NMLS #1951881
 BTullis@onetrusthomeloans.com
 (406) 607-9190
 onetrusthomeloans.com/contact/btullis



4.875% RATE / 5.785% APR*



PRICING SUBJECT TO CHANGE WITH SELECTIONS



**PAYMENTS
 AS LOW AS**

\$2,166/MONTH
(P&I PAYMENT)

**Grizzly Floor Plan – B Side
 Mountain View Community**



✓ **3 bedrooms**

✓ **2 baths**

✓ **1,316 sq. ft.**

205 S Main Street, Suite 102, Kalispell, MT 59901

Regulated by Montana Division of Banking & Financial Institutions, License #2472138. CalCon Mutual Mortgage LLC, dba OneTrust Home Loans is an Equal Housing Lender NMLS #46375; 3838 Camino del Rio N Suite 305, San Diego, CA 92108. Corporate phone (888) 488-3807. For more licensing information visit: <https://onetrusthomeloans.com/licensing-information/>. *The advertised loan is a FHA 30-year Fixed Rate Loan with a 30-year fully amortizing term. The interest rate is 4.875% for 360 months. The disclosed APR is based on the payment of 1.5 discount points. For a \$409,447 loan, there is a 5.785% APR with a monthly principal and interest payment of \$2,166.83 for 360 months. Interest rate quoted assumes a purchase with 30-day lock pricing at 96.5% loan-to-value (LTV), a minimum FICO score of 620 on a primary residence. The actual interest rate, APR, and payment may vary based on the specific terms of the loan selected, verification of information, your credit history, the location and type of property, and other factors as determined by the Lender. Payments shown do not include taxes and insurance, actual payment obligations will be greater. This is an FHA program. Please call your local HUD office to verify or visit their website at http://portal.hud.gov/hudportal/HUD?src=/program_offices/housing. Not all applicants will qualify. Rates and terms are subject to change without notice. Other terms are available. The home loan application must be dated on or before December 1, 2025, and must fund with OneTrust Home Loans to receive the promotional rate. This offer cannot be combined with other promotions. Other restrictions may apply; please ask your Mortgage Loan Originator for more details. The promo is subject to change without notice.

